



2025 Consumer Confidence Report on
Water Quality for 2024

Annual Water Quality Report

Mill Neck Estates Operations
District

Public Water Supply ID# NY2902838



Message from the President

At Liberty, our priority is providing you with safe, quality drinking water every single day. We pride ourselves on the investments we make to accomplish this – from improving infrastructure to enhancing our operations – we work around the clock to ensure your drinking water meets and exceeds all Safe Drinking Water Act (SDWA) standards established by the United States Environmental Protection Agency (EPA) and New York State Department of Health (NYSDOH).

We invest responsibly in our water infrastructure, as strong infrastructure is a key factor in delivering quality water. Additionally, we have a rigorous water quality program that ensures the water delivered to your home or business is not only tested by the Liberty team, but also by independent laboratories. We send the data from those tests to our local regulators to verify compliance with all applicable SDWA and NYSDOH water regulations.

In this Water Quality Report (Consumer Confidence Report), we share detailed information regarding the quality of water we provided during the calendar year 2024. The report includes data on the source of your water, the areas we serve, substances found in your drinking water with a detailed description on their source and need for removal. In addition, it outlines our intricate production process and distribution system.

If you have questions about this report, please contact us at 1-877-426-6999 TDD:711. We encourage you to visit our website at www.libertyenergyandwater.com to stay up-to-date and receive tips about water conservation which can help preserve this natural resource for future generations.

Along with the entire Liberty family, I thank you for being a valued customer. We are proud to be your water provider and look forward to serving you for years to come.

Sincerely,
Deborah Franco
President, Liberty New York Water

To request a printed copy of this report, please call us at 1-877-426-6999 TDD:711. This report can also be found at www.libertyenergyandwater.com.

Where Does My Water Come From?

Mill Neck Estates water system serves approximately 280 people through 99 connections in Mill Neck, N.Y. Our water source is 2-drilled groundwater wells located in the aquifer system beneath the land surface. Sodium hypochlorite is added to the water for bacteriological disinfection, Soda ash (Sodium carbonate) is used to raise pH, and Carus 8600 (Phosphate compound) is used to maintain optimum treatment and inhibit the corrosion of plumbing materials; and to stabilize naturally occurring iron and manganese that can cause discolored water conditions.

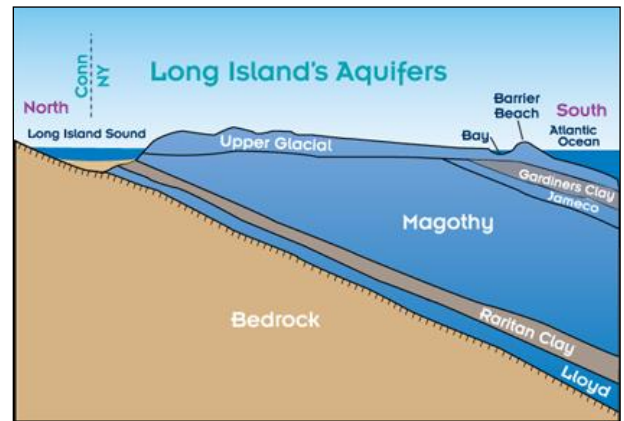


The Aquifers

The aquifers are water-bearing geologic deposits of sand and clay that absorb and store about 45 percent of the rain and snow that fall on Long Island. Mill Neck Estates Operations district has two wells in the Lloyd Aquifer, which are located north of Beach Pass West on the Mill Neck Creek Beach. Not all wells are operating at the same time, which means that the water you receive is a blend of treated water from different well locations (an integrated system).

Source Water Assessment

The NYSDOH, with assistance from the local health department and the CDM consulting firm, has completed a source water assessment for this system, based on available information. Possible and actual threats to this drinking water source were evaluated. The source water assessment includes a susceptibility rating based on the risk



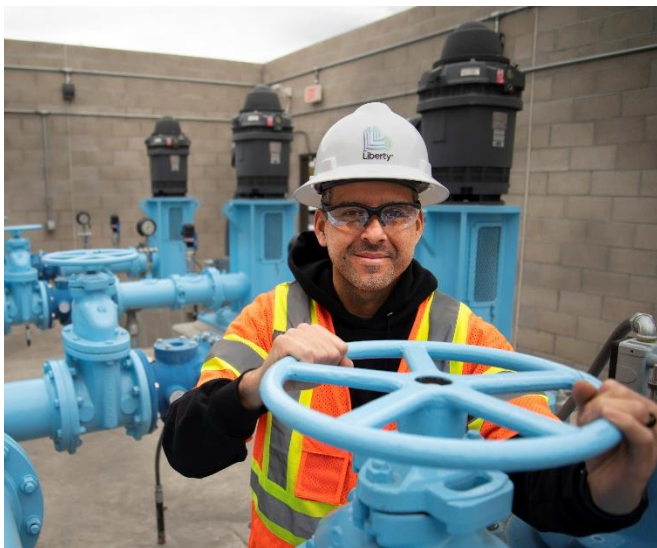
Not to scale

If you have a private well which is unregulated and untested, you should not use the water for drinking or cooking.
(Source: NCDOH)

posed by each potential source of contamination and how rapidly contaminants can move through the subsurface to the wells. The susceptibility of a water supply well to contamination is dependent upon both the presence of potential sources of contamination within the well's contributing area and the likelihood that the contaminant can travel through the environment to reach the well. The susceptibility rating is an estimate of the potential for contamination of the source water, it does not mean that the water delivered to consumers is or will become contaminated. See section "Are there contaminants in our drinking water?" for a list of the contaminants that have been detected (if any). The source water assessments provide resource managers with additional information for protecting source waters into the future. The source water assessment has both wells as having a low susceptibility to potential sources of contamination. However, due to the highly sensitive characteristics of the aquifer, continued vigilance in compliance with water quality protection and pollution prevention programs as well as continued monitoring and enforcement will help to continue to protect groundwater quality.

What are Drinking Water Standards?

Drinking water standards are the regulations set by the USEPA to control the level of contamination in the nation's drinking water. The USEPA and the NYSDOH are the agencies responsible for establishing drinking water quality standards in



Be Water Smart – Think Conservation

The New York State Department of Environmental Conservation (NYSDEC) requested that all Long Island water suppliers reduce their peak pumpage by 15 percent to ensure the long-term sustainability of the Long Island aquifer. Our customers must conserve water to help us achieve this goal. When our customers conserve, not only do they reduce their water bill, but Liberty is able to defer infrastructure investment projects that are needed to meet peak water demand, which can reach as high as 50 million gallons of water a day in the summer. More conservation tips and leak detection tools can be found at www.libertyenergyandwater.com.

New York. This approach includes assessing and protecting drinking water sources; protecting wells and surface water; making sure water is treated by qualified operators; ensuring the integrity of the distribution system; and making information about water quality available to the public. The water delivered to your home meets the standards required by the USEPA and the NYSDOH.

This report describes those contaminants that have been detected in the analyses of almost 200 different potential contaminants, nearly 100 of which are regulated by the USEPA and the NYSDOH. Liberty is proud to tell you that there have been no contaminants detected that exceed any federal or state drinking water standards. Hundreds of samples are analyzed every year by a NYS certified laboratory. Sample results are available on the Table in this report. This report is intended to provide information for all water users. If received by an absentee landlord, a business, or a school, please share the information with tenants, employees, or students. We are happy to make additional copies of this report available. You may also access this report on the Liberty web page at www.libertyenergyandwater.com.

The following suggestions will help you make your home “water efficient” without sacrificing comfort or changing lifestyles:

- Install smart irrigation technology on your irrigation system to irrigate as efficiently as possible.
- Follow our irrigation guidelines to avoid over watering your lawn and to ensure there is adequate water pressure for your neighborhood and for firefighting emergencies during the summer months.
- Install a moisture sensor on your irrigation system to prevent wasteful watering during or just after a rain.
- Use native, drought-resistant shrubs, trees, plants, and grasses in your landscape.
- Run dishwashers and washing machines only with full loads.
- Turn off the tap when brushing your teeth or shaving.
- Check every faucet for leaks. Even a slow drip can waste 15 to 20 gallons a day, or about 6,000 gallons a year.
- If you suspect that you have a water leak, order our free Leak Detection Kit. The kit contains information, hints, and dye tablets to help you determine if you have a wasteful water loss.
- Replace older devices with water-saving showerheads, faucets, or low flush toilets. A normal showerhead uses 5 to 7 gallons a minute. Switching to a low-flow model that uses 1.5 gallons a minute can save a family thousands of gallons of water a year.



Substances That Could be in Water

The sources of drinking water (both tap water and bottled water) include rivers, lakes, streams, ponds, reservoirs, springs, and wells. As water travels over the surface of the land or through the ground, it dissolves naturally-occurring minerals and, in some cases, radioactive material, and can pick up substances resulting from the presence of animals or from human activity. These substances are also called contaminants.

Contaminants that may be present in source water include:

Microbial Contaminants, such as viruses and bacteria, which may come from sewage treatment plants, septic systems, agricultural livestock operations, and wildlife.

Inorganic Contaminants, such as salts and metals, which can be naturally-occurring or result from urban stormwater runoff, industrial, or domestic wastewater discharges, oil and gas production, mining, or farming.

Pesticides and Herbicides, which may come from a variety of sources such as agriculture, urban stormwater runoff, and residential uses.

Organic Chemical Contaminants, including synthetic and volatile organic chemicals, which are byproducts of industrial processes and petroleum production, and can also come from gas stations, urban stormwater runoff, and septic systems.

Radioactive Contaminants, which can be naturally-occurring or be the result of oil and gas production and mining activities.

In order to ensure that tap water is safe to drink, the State and the EPA prescribe regulations that limit

the amount of certain contaminants in water provided by public water systems. The State Health Department's and the FDA's regulations establish limits for contaminants in bottled water which must provide the same protection for public health.

Do I Need to Take Special Precautions?

Some people may be more vulnerable to contaminants in drinking water than the general population. Immunocompromised persons such as persons with cancer undergoing chemotherapy, persons who have undergone organ transplants, people with HIV/AIDS or other immune system disorders, some elderly, and infants can be particularly at risk from infections. These people should seek advice about drinking water from their health care providers. The USEPA and Centers for Disease Control (CDC) guidelines on appropriate means to lessen the risk of infection by *Cryptosporidium* and other microbial contaminants are available from the Safe Drinking Water Hotline at 1-800-426-4791.

Cryptosporidiosis & Giardiasis

Although there have been no cases of Cryptosporidiosis in Nassau County attributable to the water supply, we thought you should be aware of the risks to people with severely weakened immune systems. Cryptosporidiosis and Giardiasis are intestinal illnesses caused by microscopic parasites that can be transmitted several ways including through drinking water. Cryptosporidiosis can be very serious for people with weak immune systems, such as transplant patients; individuals receiving chemotherapy or dialysis, and people with Crohn's disease or HIV infection. Individuals who think they may have been exposed to Cryptosporidiosis or Giardiasis should contact their health care providers immediately.

Immuno-compromised patients who may have been advised by their health care provider that they may be at risk, especially when traveling, should observe the following:

- One minute of boiling water at a rolling boil will kill *Cryptosporidium parvum* and *Giardia lamblia*.

- Drinking bottled water does not guarantee that the water is free from Cryptosporidiosis or Giardiasis. Contact your health care provider about your options. If you have questions, contact the NCDOH at 516-227-9692.

Lead & Copper Rule Statements

The Lead and Copper Rule requires sampling for lead and copper at the tap. In 1992, the first-year testing was required; tap water was sampled in compliance with EPA regulations. Test results were excellent: at least 90 percent of the lead tests were well below 10 parts per billion, and for copper, below 0.3 parts per million, indicating that the company's corrosion control treatment processes continue to be effective. The same tests were done roughly every three years from 1997 through 2023 with similar results. The next round of homeowner monitoring for the Lead and Copper Rule will be completed in the summer of 2026.

If present, elevated levels of lead can cause serious health problems, especially for pregnant women and young children. Lead in drinking water is primarily from materials and components associated with service lines and home plumbing. Liberty Utilities is responsible for providing high quality drinking water but cannot control the variety of materials used in plumbing components. When your water has been sitting for several hours, you can minimize the potential for lead exposure by flushing your tap for 30 seconds to 2 minutes before using water for drinking or cooking. If you are concerned about lead in drinking water, you may wish to have your water tested. Information on lead in drinking water, testing methods, and steps you can take to minimize exposure is available from the Safe Drinking Water Hotline at 1-800-426-4791 or at <http://www.epa.gov/safewater/lead>.



Important Health Information

Lead

Lead can cause serious health effects in people of all ages, especially pregnant people, infants (both formula-fed and breastfed), and young children. Lead in drinking water is primarily from materials and parts used in service lines and in home

plumbing. Mill Neck Estates Water System is responsible for providing high quality drinking water and removing lead pipes but cannot control the variety of materials used in the plumbing in your home. Because lead levels may vary over time, lead exposure is possible even when your tap sampling results do not detect lead at one point in time. You can help protect yourself and your family by identifying and removing lead materials within your home plumbing and taking steps to reduce your family's risk. Using a filter, certified by an American National Standards Institute accredited certifier to reduce lead, is effective in reducing lead exposures. Follow the instructions provided with the filter to ensure the filter is used properly. Use only cold water for drinking, cooking, and making baby formula. Boiling water does not remove lead from water. Before using tap water for drinking, cooking, or making baby formula, flush your pipes for several minutes. You can do this by running your tap, taking a shower, doing laundry or a load of dishes. If you have a lead service line or galvanized requiring replacement service line, you may need to flush your pipes for a longer period. If you are concerned about lead in your water and wish to have your water tested, contact Liberty NY Water at 1-877-426-6999 TDD:711.

Information on lead in drinking water, testing methods, and steps you can take to minimize exposure is available at <https://www.epa.gov/safewater/lead> Pg 19 (22 for PDF) and Pg 35 (38 for PDF) of "Preparing Your Drinking Water Annual Water Quality Report, Guidance For Water Suppliers.

A Lead Service Line (LSL) is defined as any portion of pipe that is made of lead which connects the water main to the building inlet. An LSL may be owned by the water system, owned by the property owner, or both. The inventory includes both potable and non-potable SLs within a system. In accordance with the federal Lead and Copper Rule Revisions (LCRR) our system has prepared a lead service line inventory and have made it publicly accessible by <https://new-york-water.libertyutilities.com/all/residential/safety/lea>

[d-in-drinking-water-new-york-water.html](#). Our water system has completed the Lead Service Line Inventory (LSLI) as required. We have identified all services in the water system and found all services to be non-lead.



Is Our Water System Meeting Other Rules That Govern Our Operations?

During 2024, Mill Neck Estates water system was in compliance with applicable State drinking water operating, monitoring and reporting requirements.

How Might I Become Actively Involved?

Customers can participate in decisions that may affect the quality of water by:

- Reading the information provided in bill inserts and special mailings
- Contacting the company directly with questions or to discuss issues
- Responding to survey requests
- Attending presentations by the company made to local community and civic associations. Dates in 2025 TBD.
- Contacting agencies such as the Nassau County Health Department (NCDOH) at 516-227-9692.

Testing Results

During the year, Liberty collects water samples to determine the presence of any radioactive, biological, inorganic, or organic contaminants. All of the substances listed in the table below tested under the Maximum Contaminant Level (MCL). Liberty believes it is important you know what was detected, and how much of the substance was present. The state allows the monitoring of certain substances less than once a year because the concentrations of these substances do not change frequently. If a substance was tested and there was no detection, it is not listed in this table. You can find Definitions, Terms and Abbreviations related to this Table in the next section for easy reference.

Mill Neck Estates 2024 Annual Water Quality Report								
PRIMARY STANDARDS - Health Based								
DISTRIBUTION SYSTEM								
Disinfectant Residuals	Violation? (Yes/No)	Date of Sample	MRDL	MCLG	Range of Detection	Average	Typical Source of Constituent	
Chlorine (ppm) ¹	No	07/2024	4	N/A	0.34 – 1.50	1.03	Drinking water disinfectant added for treatment.	

Lead & Copper ²	Violation? (Yes/No)	Date of Sample	AL	MCLG	Sample Data	Range of Detection	90th % Level	Typical Source of Constituent
Copper (ppm)	No	06-07/2023	1.3	1.3	1 of the 7 samples collected exceeded the MCL.	0.35 – 1.6	1.1	Corrosion of household plumbing systems.
Lead (ppb)	No		15	0	0 of the 7 samples collected exceeded the action level.	ND – 5.9	4.0	Corrosion of household plumbing systems and service lines connecting building to water mains.

RAW WELLS						
Radiological Constituents ³	Violation? (Yes/No)	Date of Sample	Primary MCL	MCLG	Range of Detections	Typical Source of Constituent
Gross Beta (pCi/L)	No	09/2024	50 ^a	0	0.73 – 1.05	Decay of natural deposits and man-made emissions.
Uranium (ppb)	No	09/2024	30 ^b	0	0.20 – 0.25	Erosion of natural deposits.
Gross Alpha activity (pCi/L)	No	09/2024	15	0	0.68 – 0.80	

Inorganic Constituents	Violation? (Yes/No)	Date of Sample	Primary MCL	MCLG	Range of Detections	Typical Source of Constituent
Barium (ppm)	No	09/2024	2	2	0.0055 – 0.0056	Discharge of drilling wastes; Discharge from metal refineries; Erosions of natural deposits.
Nitrate (ppm)	No	09/2024	10	10	1.3 – 1.4	Erosion of natural deposits, fertilizers, sanitary waste systems.
Copper (ppm)	No	09/2024	1.3	0.3	ND – 0.021	Erosion of natural deposits; leaching from wood preservatives.
Lead (ppb)	No	09/2024	15	0.2	ND – 1.8	Erosion of natural deposits.
Chloride (ppm)	No	08/2024	250	N/A	Avg- 5.0 4.6 – 10.1	Natural occurring or indicative of road salt contamination.
Zinc (ppm)	No	09/2024	5	N/A	ND – 0.18	Naturally occurring; Mining waste.

SECONDARY STANDARDS – Aesthetics						
RAW WELLS						
Constituent	Violation? (Yes/No)	Date of Sample	Secondary MCL	MCLG	Average/ Range	Typical Source of Constituent
Sodium (ppm) ⁴	No	09/2024	N/A	N/A	4.0	Naturally occurring; Road salt; Water softeners.
Iron (ppm)	No	09/2024	300	N/A	0.02 – 0.03	Naturally occurring.

UNREGULATED CHEMICAL MONITORING						
RAW WELLS						
Constituent	Violation? (Yes/No)	Date of Sample	Notification Level	Range of Detection	Typical Source of Constituent	
Alkalinity (ppm)	N/A	09/2024	N/A	12.4 – 12.5	N/A	
Calcium Hardness (ppm)	N/A	09/2024	N/A	8.3 – 8.4	N/A	
Calcium (ppm)	N/A	09/2024	N/A	3.3 – 3.4	N/A	
Corrosivity (LSI) ⁵	N/A	09/2024	N/A	(-3.41) – (-3.34)	N/A	
Total Hardness (ppm)	N/A	09/2024	N/A	13.9 – 14.0	N/A	
Magnesium (ppm)	N/A	09/2024	N/A	1.4 – 1.4	N/A	
pH (units) ⁶	N/A	12/2024	N/A	6.3 – 7.4	N/A	
TDS (ppm)	N/A	09/2024	N/A	28 – 31	N/A	
6:2-Fluorotelomersulfonic acid (6:2 FTS) (ppt)	N/A	02/2024	N/A	ND – 5.34	See footnote ⁷	

Notes:

- Chlorine residual results in the table above represent averages of samples taken at the treatment plant Point-of-Entry location to the distribution system.
- The levels presented represents the 90th percentile of copper and lead of 7 sites tested for in 2023. The MCL for copper was exceeded by 1 location tested in 2023. The “action level” for lead was not exceeded at any of the 7 locations tested in 2023.
- Radiological results are from raw water wells, and not distribution locations, as required by the NCDOH. (a) The State considers 50 pCi/L to be the level of concern for beta particles. (b) 30 µg/l of uranium is approximately 20.1 pCi/L
- Sodium (mg/l): Water containing more than 20 mg/l of sodium should not be used for drinking by people on a severely restricted sodium diet. Water more than 270 mg/l of sodium should not be used for drinking by people on a moderately restricted diet.
- The NCDOH recommends that the Langelier Saturation Index (for corrosivity) be as close to zero as possible.
- NCDOH guidelines recommend a pH range of 7.0 – 9.0.
- This chemical is a part of a larger group of chemicals referred to as perfluoroalkyl substances (PFASs). PFAS are manmade chemicals that have been widely used in various consumer, commercial, and industrial products since the 1950s. These chemicals’ unique properties make them resistant to heat, oil, stains, grease, and water and useful in a wide variety of everyday products. The numbers reported here is the range of detections at the raw water wells.



Definitions, Terms and Abbreviations

90th percentile: For Lead and Copper testing. 10% of test results are above this level and 90% are below this level.

AL: Action Level, or the concentration of a contaminant which, when exceeded, triggers treatment or other requirements which a water system must follow.

Contaminant: Any physical, chemical, biological, or radiological substance or matter in water.

HAA5: Haloacetic Acids (mono-, di- and tri-chloroacetic acid, and mono- and di- bromoacetic acid) as a group.

Healthy Advisory (HA): EPA's health advisories are non-enforceable and non-regulatory and provide technical information to states agencies and other public health officials on health effects, analytical methodologies, and treatment technologies associated with drinking water contamination.

MCLG: Maximum Contaminant Level Goal, or the level of a contaminant in drinking water below which there is no known or expected risk to health. MCLGs allow for a margin of safety.

MCL: Maximum Contaminant Level, or the highest level of a contaminant that is allowed in drinking water. MCLs are set as close to the MCLGs as feasible using the best available treatment technology.

MRDL: Maximum Residual Disinfectant Level, or the highest level of a disinfectant allowed in drinking water. There is convincing evidence that the addition of a disinfectant is necessary for control of microbial contaminants.

MRDLG: Maximum Residual Disinfectant Level Goal, or the level of a drinking water disinfectant below which there is no known or expected risk to health. MRDLGs do not reflect the benefits of the use of disinfectants to control microbial contaminants.

NA: not applicable.

ND: not detectable at testing limits.

pCi/L: picocuries per liter, a measure of radioactivity

ppb: parts per billion or micrograms per liter.

ppm: parts per million or milligrams per liter.

ppt: parts per trillion or nanograms per liter.

Total Dissolved Solids (TDS): An overall indicator of the amount of minerals in the water.

TTHM: Total Trihalomethanes (chloroform, bromodichloromethane, dibromochloromethane, and bromoform) as a group.

What Does This Information Mean?

As you can see by the table, our system had no sample limit violations in 2024. We have learned through our testing that some contaminants have been detected; however, these contaminants were detected below New York State requirements.

Why Save Water? How To Avoid Wasting It.

Although our system has an adequate amount of water to meet present and future demands, there are several reasons why it is important to conserve water:

- Saving water saves energy and some of the costs associated with both necessities of life.
- Saving water reduces the cost of energy required to pump water and the need to construct costly new wells, pumping systems, and water towers; and
- Saving water lessens the strain on the water system during a dry spell or drought, helping to avoid severe water use restrictions so that essential firefighting needs are met.

You can play a role in conserving water by becoming conscious of the amount of water your household is using, and by looking for ways to use less. More efficient water use protects our valuable natural resource and conservation is easy. Useful tips for conserving include:

- Follow our irrigation guidelines to avoid over watering your lawn and to ensure there is adequate water pressure for your neighborhood and for firefighting emergencies during the summer months.
- Turn off the tap when brushing your teeth.
- Consider water and energy-efficient appliances. Upgrade to EPA certified Energy Star and WaterSense appliances to save both on water and energy without sacrificing performance. The USEPA reports that EPA-certified Energy Star washing machines may use 35% less water per load.
- Check every faucet, toilet, and showerhead in your home for leaks – 10 percent of homes have leaks that waste 90 gallons or more per day; don't be part of the 10%.

Check your toilets for leaks by putting a few drops of food coloring in the tank, watch for a few minutes to see if the color shows up in the bowl. It is not uncommon to lose up to 100 gallons a day from one of these otherwise invisible toilet leaks. Fix it and save more than 30,000 gallons a year. More conservation tips and leak detection tools can be found at www.libertyenergyandwater.com.

Closing

Thank you for allowing us to continue to provide your family with quality drinking water this year. We ask that all our customers help us protect our water sources. For questions concerning this report call Liberty Customer Service at 1-877-426-6999 TDD:711; or on the web at www.libertyenergyandwater.com.

Liberty - New York Water

60 Brooklyn Avenue
Merrick, NY 11566

<p>Spanish Este informe contiene información muy importante sobre su agua beber. Tradúzcalo ó hable con alguien que lo entienda bien.</p>	<p>French Ce rapport contient des informations importantes sur votre eau potable. Traduisez-le ou parlez en avec quelqu'un qui le comprend bien.</p>
<p>Korean 아래의 보고는 귀하께서 드시는 식수에 대한 중요한 정보가 포함되어 있습니다. 번역은 해설과 아니며 이 보고를 읽고 이해하시는분과 맞닿하시기를 바랍니다.</p>	<p>Chinese 这份报告含有非常重要有关您喝的饮用水的资料。请找懂得这份报告的人翻译或解释给您听。</p>

Listing of Non-Detected (ND) Contaminants – 2024 (Mill Neck Estates Operations)

None of the following compounds that we analyzed for were detected in your drinking water at the respective method detection levels:

Microbiological:

E. coli
Total Coliform

Inorganics & Physical:

Ammonia as N
Cyanide, free
Nitrite as N
Odor
Perchlorate
Sulfate
Color
Turbidity

Metals:

Antimony
Arsenic
Beryllium
Cadmium
Chromium
Mercury
Selenium
Silver
Thallium
Fluoride

Radionuclides:

Combined Radium

Disinfection By-Products:

Total Trihalomethanes
(Includes the following parameters):
Bromoform
Bromodichloromethane
Dibromochloromethane
Chloroform)
Total Haloacetic Acids
(Includes the following parameters):
Monochloroacetic acid
Dichloroacetic acid
Trichloroacetic acid
Bromoacetic acid
Dibromoacetic acid)

Volatile Organic Compounds (VOC's):

Benzene
Bromobenzene
Bromochloromethane
Bromomethane
n-Butylbenzene
sec-Butylbenzene
tert-Butylbenzene
Carbon Tetrachloride
Chlorobenzene
Chloroethane
Chloromethane
2-Chlorotoluene
4-Chlorotoluene
Dibromomethane
1,2-Dichlorobenzene
1,3-Dichlorobenzene

1,4- Dichlorobenzene (Meta)
Dichlorodifluoromethane
1,1-Dichloroethane
1,2-Dichloroethane
1,1-Dichloroethane
cis-1,2-Dichloroethene
trans-1,2-Dichloroethene
1,2-Dichloropropane
1,3-Dichloropropane
2,2-Dichloropropane
1,1-Dichloropropene
cis-1,3-Dichloropropene
trans-1,3-Dichloropropene
Ethylbenzene
Hexachlorobutadiene
Isopropylbenzene
4-Isopropyltoluene
Methyl Tertiary Butyl Ether (MTBE)
Methylene Chloride (Dichloromethane)
n-Propylbenzene
Styrene
1,1,1,2-Tetrachloroethane
1,1,2,2-Tetrachloroethane
Tetrachloroethene (PCE)
Toluene
1,2,3-Trichlorobenzene
1,2,4-Trichlorobenzene
1,1,1-Trichloroethane
1,1,2-Trichloroethane
Trichloroethene (TCE)
Trichlorofluoromethane
1,2,3-Trichloropropane
1,2,4-Trimethylbenzene
1,3,5-Trimethylbenzene
M-Xylene
O-Xylene
P-Xylene

Synthetic Organic Compounds (SOC's): *

Regulated Group #1:

Alachlor
Aldicarb
Aldicarb Sulfone
Aldicarb Sulfoxide
Atrazine
Carbofuran
Chlordane, Total
1,2-Dibromo-3-Chloropropane (DBCP)
2,4-D
Endrin
1,2-Dibromomethane (EDB)
Heptachlor
Heptachlor Epoxide
Lindane
Methoxychlor
PCB's
Pentachlorophenol
Toxaphene
2,4,5-TP (Silvex)

Regulated Group #2:

Aldrin
Benzo(a)pyrene
Butachlor
Carbaryl
Dalapon
Di (2-Ethylhexyl) adipate
Di (2-Ethylhexyl) phthalate
Dicamba
Dieldrin
Dinoseb
Diquat
Endothall
Glyphosate
Hexachlorobenzene
Hexachlorocyclopentadiene
3-Hydroxycarbofuran
Methomyl
Metolachlor
Metribuzin
Oxamyl (Vydate)
Picloram
Propachlor
Simazine
2,3,7,8-TCDD (Dioxin)

* SOC's are mainly pesticides and herbicides, and were collected on raw water wells, as per NCDOH regulations.

Newly Regulated Compounds

1,4-Dioxane
Perfluorooctanoic acid (PFOA)
Perfluorooctanesulfonic acid (PFOS)

Unregulated Compounds:

Perfluorobutanesulfonic acid (PFBS)
Perfluorobutanoic acid (PFBA)
Perfluorononanoic Acid (PFNA)
Perfluorodecanoic Acid (PFDA)
Perfluorohexanoic Acid (PFHxA)
Perfluoroheptanoic Acid (PFHpA)
Perfluorododecanoic Acid (PFDoA)
Perfluorohexanesulfonic acid (PFHxS)
Perfluorotridecanoic Acid (PFTTrDA)
Perfluorotetradecanoic Acid (PFTA)
Perfluoroundecanoic Acid (PFUnA)
11-Chloroicosafuoro-3-oxaundecane-1-sulfonic acid (11CI-PF3OUdS)
4:2 Fluorotelomer sulfonic acid (4:2 FTS)
8:2 Fluorotelomer sulfonic acid (8:2 FTS)
9-Chlorohexadecafluoro-3-Oxanone-1-Sulfonic Acid (9CI-PF3ONS)
4,8-dioxa-3H-perfluorononanoic acid (ADONA)
HFPO-DA (Gen-X)
Nonafuoro-3,6-dioxaheptanoic acid (NFDHA)
Perfluorobutanoic acid (PFBA)
Perfluoro(2-ethoxyethane)sulphonic acid (PFEEESA)
Perfluoroheptane sulfonic acid (PFHpS)
Perfluoro-4-methoxybutanoic acid (PFMBA)
Perfluoro-3-methoxypropanoic acid (PFMPA)
Perfluoropentanoic acid (PFPeA)
Perfluoropentane sulfonic acid (PFPeS)